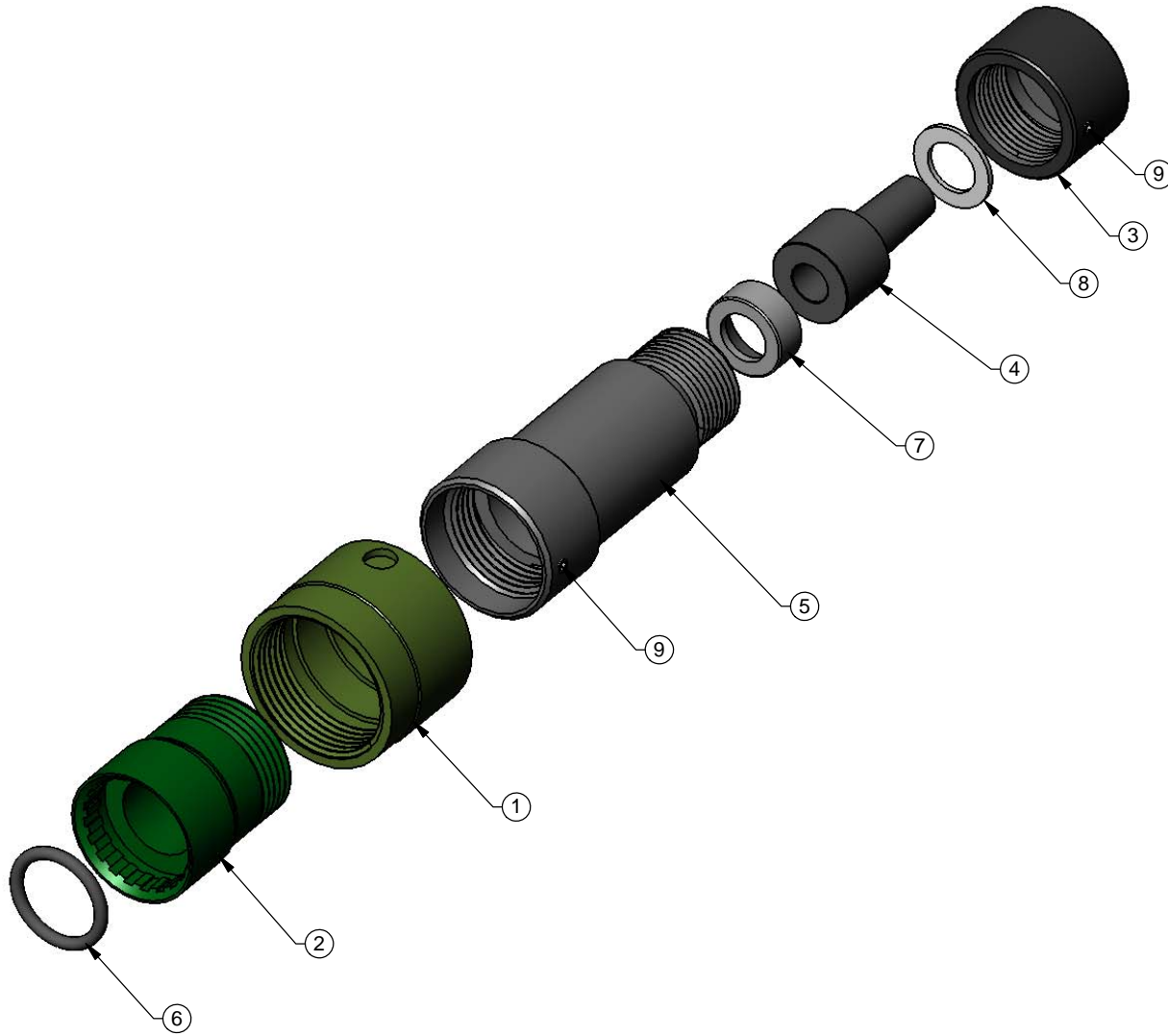


CAD MAINTAINED DRAWING. MANUAL CHANGES ARE NOT PERMITTED.



CHANGES


REV.	DESCRIPTION	DATE	APP.
------	-------------	------	------

NOTES:

1. INTERPRET DRAWING PER ANSI Y 14.5

ITEM	QTY	PART NO.	DESCRIPTION
1	1	SB-017	COUPLING RING, ADAPTER, 4 CHANNEL SHIPBOARD
2	1	SB-018	BODY, ADAPTER, 4 CHANNEL SHIPBOARD
3	1	TL-P-004	STRAIN RELIEF NUT, TFOL
4	1	TL-P-007	STRAIN REL. GASKET
5	1	TL-P-002	BACK SHELL
6	1	OR-EP-014	O-RING, EPDM, SIZE -.014
7	1	TL-P-008-316	STRAIN RELIEF CLAMP, STAINLESS STEEL
8	1	SW-005	WASHER, NYLON, .31 X .50
9	2	SS-SS-4-40x094	SET SCREW, 18-8 STAINLESS STEEL, CUP POINT, #4-40 X .094

THE INFORMATION CONTAINED IN THIS DRAWING IS CONFIDENTIAL AND THE SOLE PROPERTY OF QPC FIBER OPTIC. ANY REPRODUCTION IN PART OR AS A WHOLE OR DISCLOSURE OF CONTENT WITHOUT THE WRITTEN PERMISSION OF QPC FIBER OPTIC IS PROHIBITED.

DIMENSIONS ARE IN INCH	DRAWN CWN DATE 12/13/10	 QPC <small>ENGINEERED FIBER OPTIC SOLUTIONS</small> QPC FIBER OPTIC, INC. www.qpcfiber.com
	REVIEW REVIEW REVIEW DATE	
TOLERANCES (UNLESS OTHERWISE SPECIFIED) ANG: LEN :	CHECK DATE	ASSEMBLY, BACKSHELL, 4 CHANNEL, SIZE 13
SCALE: 1:1 SHEET 1 OF 1	CAGE 1MGL1	
		REV 0